

Venue Player

Uncompressed HD and 4K Player-Recorders



Video **Clarity**



Tools for Video Analysis

A professional, highly reliable player-recorder line-up with several HD and 4K input/output options, Venue Player systems are ideal when uncompressed video sources are needed for recording and playback in venues, broadcasting, content quality review, video product testing labs, and network performance testing.

Venue Players provide fully uncompressed and multiple synchronized video playback with capabilities for applying different resolutions on each output and vertical ancillary data (VANC) included.

Applications:

- Broadcast, enterprise, or venue content playback
- Encoder/decoder testing
- Signal path and video data integrity checking
- Lab facility uncompressed content player/server
- Long-haul IP network test source
- High quality surveillance recording and playback

The Venue Players include visually complex uncompressed test sequences and also allow for easy recording of additional sequences of any length. A new sequence can either be input and automatically decoded from an IP stream, imported from any of the file import formats shown on the right, or it can be recorded from uncompressed SDI interfaces.

Each sequence may be trimmed with in and out points set. Using the play list feature, any test sequence can be grouped with other test sequences and played in a defined order.

The VANC and audio can be optionally turned on or off to allow complete sequence structural freedom.

The Venue Players for HD and 4K configurations:

- A compact 1RU player-recorder for HD and 4K
- A portable player-recorder with single Quad 3G-SDI, dual Quad 3G-SDI, or with 2 in, 2 out 12G-SDI
- Includes a hard carry case and 2RU rack ears for user application versatility

Options:

- Waveform & Vectorscope Application - CV-WFM
- Sarnoff Test Patterns
 - a. Visualizer - VIS
 - b. Encoder Stress Pattern - ESP
 - c. Color Space and Monitor Test Patterns - CSM

ClearView Importer

Imported File Formats (partial list)

Accom YUV CCIR 601 8-bit
 ARI Raw Bayer Pattern
 Avid AVR, DS HD/SD, DV (*.gen), DNxHD
 Avid Meridian, Y'CbCr, OMFI (*.omf, *.omfi)
 AVR, JFIF, JPED, Meridian, RGB, Y'CbCr
 Cineon (*.cin), CineWave
 DPX RGB 8, RGB 10, Y'CbCr 4:2:2
 DV (*.dv, *.dif), Digital Negative (*.dng)
 DVS Direct File Format (*.dvs)
 DVSD, DV25, DV50, MPEG-I, mJPEG, DigiSuite
 H.261, H.263, H.264, H.265, HDV
 Headerless/Raw (*.hdr, *.yuv, *.rgb, *.raw)
 HiCon SLB32 RFB format (*.slb)
 Image (*.gif, *.jpg, *.png), Jaleo Direct Format (*.js)
 JPEG, JPEG2000, Media 100 MJPEG
 Microsoft AVI (*.avi), BMP, DIB Files (*.dps)
 MJPEG, MPEG 1 4:2:0 (*.mpg, *.mpeg)
 MPEG-2 Elem. Stream, (4:2:0/4:2:2), MPEG-2 (*.m2v)
 MPEG-2 Program Stream, (4:2:0/4:2:2)
 MPEG-2/4 in Transport Stream, (4:2:0/4:2:2)
 MPEG-2/4 in MPTS (4:2:0, 4:2:2), MPEG-4 (*.m4v)
 MPEG-4/AVC Elementary Stream 4:2:0/4:2:2, (*.h264)
 MPEG-H HEVC/H.265 4:2:0 Main Profile (*.h265)
 MXF Format (DCP, DV, DVCPro50, MPEG, IMX, OP1a)
 Newtek Video Toaster (*.rtv)
 Phantom Support (*.cine), PhotoShop FilmStrip (*.flm)
 Photo CD PCD, Photoshop PSD, Portable anymap PNM
 Portable Bitmap Format PBM DPS
 Portable graymap PGM
 Portable pixmap PPM
 Profile GXF Format/SMPTE-360 (*.gxf)
 QuickTime Movies (*.mov)
 QuickTime formats w/proper codec, ProRes, etc...
 RealVideo (*.ra, *.rm, *.ram), Red Camera Stream (*.r3d)
 Run-Length encoding (*.rle)
 Sony XDCam, SGI Movie Format (*.mv), SGI RGB
 Silicon Image Bayer (*.siv), Sun Raster (*.ras)
 Targa TGA, ICB, VDA, VST, Targa 3000, TIFF, TIF
 v210 Y'CbCr 10 Bit, VC-1 Pro, Viewstore (*.vsr)
 vcap, vcap10, Windows Media (*.asf, *.wmf, *.wmv)
 Y'CbCr 8/10, Y'CbCr, RGB, YCrCb 8/RGBA

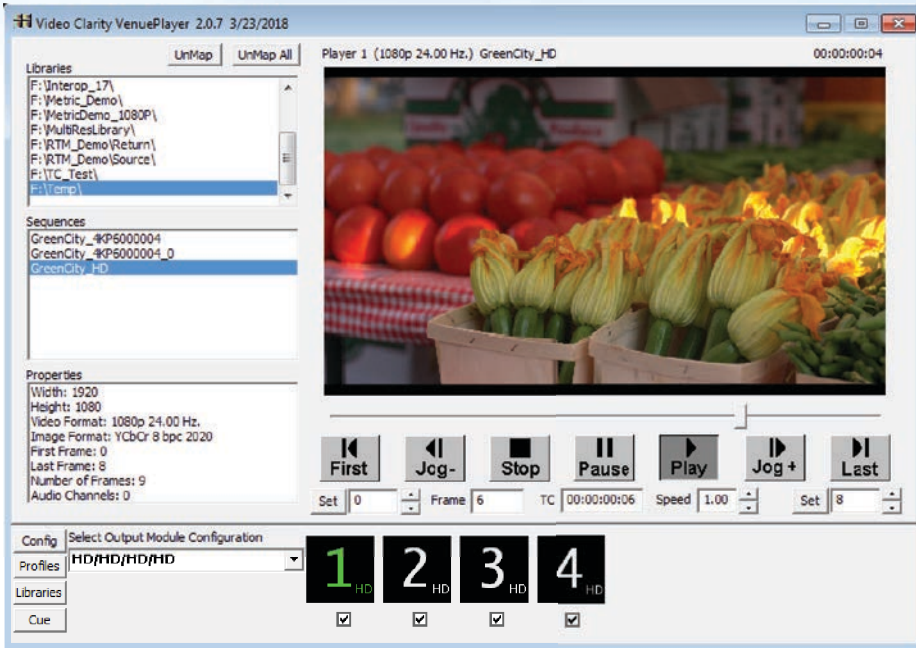
Audio Import Formats

Dolby® Digital Plus Professional Input Decoder
 MPEG-2 Layer 1 (*.mp1)
 MPEG-2 Layer 3 (*.mp3)
 Waveform Audio (*.wav)
 Adaptive Multi-rate (*.amr)
 Audio Interchange File Format (*.aiff)
 Windows Media Audio (*.wma)
 Advanced Audio Coding (*.aac)

Exported File Formats

BMP, Headerless/Raw (*.yuv, *.rgb, *.raw)
 Microsoft AVI (*.avi), MXF (v210)
 QuickTime with up to 16 audio channels

Venue Player GUI



ClearView Player-Recorder GUI



Control

- Venue Player - Desktop GUI
- Venue Player Manager - Browser GUI
- ClearView Player-Recorder - GUI
- VDCP or Command Line Interface

Operation

Record uncompressed video via 3G-SDI:

- Video (8, 10, or 12 bit)
- Audio (up to 16 channels)
- VANC data (all lines)
- Timecode (on SDI or LTC analog)
- Multiple inputs with CLI control

Record to uncompressed via 1G IP:

- MPEG-TS stream capture/decoding

Import multiple file types with the included ClearView Importer:

- Uncompressed video importing
- Decode a variety of files in all formats

Play up to four sequences via 3G-SDI:

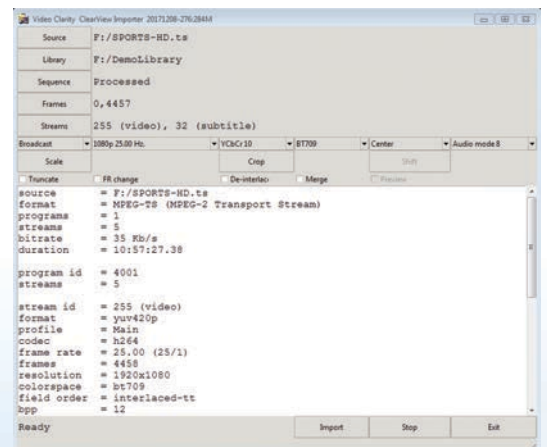
- Video (8, 10, or 12 bit)
- Audio (up to 16 channels)
- VANC data (all lines)
- Timecode (on SDI or LTC analog)

Create play lists from CV Library:

- Play sequences in order or loop play
- Repeat as required for 24 X 7 operation

ClearView Importer

A comprehensive file importing tool for any media file ingest as uncompressed video, audio, and VANC data for playback.



Venue Player HD and 4K - Specifications

Venue Player 1RU



Model #: CVVP-1044

Storage: 4.0 TB

Includes: Venue Player GUI, ClearView Player-Recorder GUI, CV-Importer GUI, 1 RU rack ears, 4 SMB/BNC plus HDMI mini cable, system guide PDFs
CVVP-1045: Available on request

Video I/O: Uncompressed SD, HD, UHD, 4K
3G-SDI: 4 SMB/BNC inputs or outputs
- Record or play up to 4 1080p60, or 1 2160p60
Analog: 1 Y'PrPb Comp, or S-Video out
HDMI 1.4b: 1 output on HDMI mini (cable supplied)
Audio I/O: 24 bit, 48 KHz PCM, or DD+
- 16 ch. audio per video (embedded in SDI)
- 8 channels output on HDMI

Video Standards Supported:

SMPTE 259, 292, 296, 424, 425, 4K/UHD as Quad HD or two sample interleaved (2SI)
VANC: All lines record and playback
Ref In: Tri-Level, BB (1V), or CVBS (2, 4V)
Timecode: SMPTE-12M on SDI, LTC analog
Gigabit Ethernet IP Network:
2 RJ45 - control & capture/decode of IP video

Power: 100 - 240VAC, 47-63Hz, Autodetect, 300 Watts Max

Dimensions: 17" W x 1.75" H x 13.5" D
43.2 cm x 4.5 cm x 34.3 cm

Weight: 16.5 lbs, 7.5 Kg

Temperature: Operating 0 - +40 Celsius
Storage -20 - +50 Celsius

Rel. Humidity: 5 - 95%, noncondensing

Venue Player Portable Systems



Model #: CVVP-2044

Storage: 4.0 TB

Includes: Venue Player GUI, ClearView Player-Recorder GUI, CV-Importer GUI, 2RU rack ears, 4 SMB/BNC and HDMI mini cable, hard carry case, mouse, system guide PDFs

Video I/O: Uncompressed SD, HD, UHD, 4K
3G-SDI: 4 SMB/BNC inputs or outputs
- Record or play up to 4 1080p60, or 1 2160p60
Analog: 1 Y'PrPb Comp, or S-Video out
HDMI 1.4b: 1 output on HDMI mini cable supplied
Audio I/O: 24 bit, 48 KHz PCM, or DD+
- 16 ch. audio per video (embedded in SDI)
- 8 channels output on HDMI

Video Standards Supported:

SMPTE 259, 292, 296, 424, 425, 4K/UHD as Quad HD or two sample interleaved (2SI)
VANC: All lines record and playback
Ref In: Analog black (1V) or CVBS (2 or 4V)
Timecode: SMPTE-12M on SDI, LTC analog
Gigabit Ethernet IP Network:
2 RJ45 - control & capture/decode of IP video

Power: 100 - 240VAC, 47-63Hz, Autodetect, 300 Watts Max

Dimensions: 8.6" W x 3.5" H x 13.5" D
22.0 cm x 9.0 cm x 35.0 cm

Weight: 11.5 lbs, 5.4 Kg

Temperature: Operating 0 - +40 Celsius
Storage -20 - +50 Celsius

Rel. Humidity: 5 - 95%, noncondensing

Model #: CVVP-2045

Storage: 4.0 TB

Includes: Venue Player GUI, ClearView Player-Recorder GUI, CV-Importer GUI, 2RU rack ears, 5 HD-BNC to BNC conversion cables, hard carry case, keyboard, mouse, system guide PDFs

Video I/O: Uncompressed SD, HD, UHD, 4K
12G-SDI: 4 HD-BNC inputs or outputs
- In or out up to 4096X2160p 60Hz 10-bit
- Up to 4 1920X1080p 60Hz 10-bit
HDMI 2.0: 1 output on HDMI standard connector
Audio I/O: 24 bit, 48 KHz PCM, or DD+
- 16 ch. audio per video (embedded in SDI)
- 8 channels output on HDMI

Video Standards Supported:

SMPTE 259, 292, 296, 424, 425a/b, 4K/UHD as two sample interleaved (2SI)
VANC: All lines record and playback
Ref In: Tri-Level, BB (1V), or CVBS (2, 4V)
Timecode: SMPTE-12M on SDI, LTC analog
Gigabit Ethernet IP Network:
2 RJ45 - control & capture/decode of IP video

Power: 100 - 240VAC, 47-63Hz, Autodetect, 300 Watts Max

Dimensions: 8.6" W x 3.5" H x 13.5" D
22.0 cm x 9.0 cm x 35.0 cm

Weight: 11.5 lbs, 5.4 Kg

Temperature: Operating 0 - +40 Celsius
Storage -20 - +50 Celsius

Rel. Humidity: 5 - 95%, noncondensing

Model #: CVVP-2084* (no photo)

Includes: Venue Player GUI, ClearView Player-Recorder GUI, CV-Importer GUI, 2RU rack ears, 10 SMB-BNC to BNC conversion cables, hard carry case, keyboard, mouse, system guide PDFs

Storage: 4.0 TB
Video I/O: Uncompressed SD, HD, UHD, 4K
3G-SDI: 8 SMB-BNC inputs or outputs
- 2 in or 2 out up to 4096X2160p 60Hz 10-bit
- Up to 8 1920X1080p 60Hz 10-bit
Audio I/O: 24 bit, 48 KHz PCM, or DD+
- 16 ch. audio per video (embedded in SDI)

Video Standards Supported:

SMPTE 259,292,296,424,425, 4K Quad & 2SI
VANC: All lines record and playback
Ref In: SMB-BNC black burst or tri-level sync
LTC In: SMB-BNC or SMPTE-12M on SDI
Gigabit Ethernet IP Network:
2 RJ45 - control & capture/decode of IP video

Power: 100-240VAC, 47-63Hz, 300W Max
Dimensions: 8.6" W x 3.5" H x 13.5" D
22.0 cm x 9.0 cm x 35.0 cm

Weight: 11.5 lbs, 5.4 Kg

Temperature: Operating 0 - +40 Celsius
Storage -20 - +50 Celsius

Rel. Humidity: 5 - 95%, noncondensing

*Waveform and vectorscope option, CV-WFM, not applicable to model CVVP-2084

Product design and specifications are subject to change without notice or obligation. Video Clarity, Inc.
Dolby and the double-D symbol are trademarks of Dolby Laboratories