

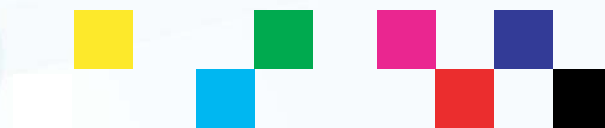
Venue Player HD

Uncompressed Full HD

Multi-Channel Player-Recorders



Video **Clarity**



Tools for Video Analysis

A professional, highly reliable player-recorder for multiple inputs and outputs. The Venue Player HD systems are ideal when uncompressed video sources are needed for digital transmission, picture and VANC data inspection, or product testing.

The Venue Player HD provides uncompressed recording and playback for venues, broadcast programming, content quality review, and network performance testing.

Applications:

- Broadcast, enterprise or venue content playback
- Encoder/decoder testing
- Signal path and video data integrity checking
- Lab facility uncompressed content player/server
- Long-haul IP network test source

The Venue Player HD includes visually complex uncompressed test sequences and also allows for easy recording of additional sequences of any length. A new sequence can either be input and automatically decoded from an IP stream, imported from any of the file import formats shown on the right, or it can be recorded from its uncompressed 3G-SDI interfaces.

Each sequence may be trimmed with in and out points set. Using the play list feature, any test sequence can be grouped with other test sequences and played in a defined order.

The VANC and audio can be optionally turned on or off to allow complete sequence structural freedom.

The Venue Player HD comes in two models:

- A compact 1RU player-recorder
- A portable system that includes a hard carry case and rack ears for application versatility

Options:

- Waveform & Vectorscope Application - CV-WFM
- Sarnoff Test Patterns
 - a. Visualizer - VIS
 - b. Encoder Stress Pattern - ESP
 - c. Color Space and Monitor Test Patterns - CSM

ClearView Importer

Imported File Formats (partial list)

Accom YUV CCIR 601 8-bit
 ARI Raw Bayer Pattern
 Avid AVR, DS HD/SD, DV (*.gen), DNxHD
 Avid Meridian, Y'CbCr, OMFI (*.omf, *.omfi)
 AVR, JFIF, JPED, Meridian, RGB, Y'CbCr
 Cineon (*.cin), CineWave
 DPX RGB 8, RGB 10, Y'CbCr 4:2:2
 DV (*.dv, *.dif), Digital Negative (*.dng)
 DVS Direct File Format (*.dvs)
 DVSD, DV25, DV50, MPEG-I, mJPEG, DigiSuite
 H.261, H.263, H.264, H.265, HDV
 Headerless/Raw (*.hdr, *.yuv, *.rgb, *.raw)
 HiCon SLB32 RFB format (*.slb)
 Image (*.gif, *.jpg, *.png), Jaleo Direct Format (*.js)
 JPEG, JPEG2000, Media 100 MJPEG
 Microsoft AVI (*.avi), BMP, DIB Files (*.dps)
 MJPEG, MPEG 1 4:2:0 (*.mpg, *.mpeg)
 MPEG-2 Elem. Stream, (4:2:0/4:2:2), MPEG-2 (*.m2v)
 MPEG-2 Program Stream, (4:2:0/4:2:2)
 MPEG-2/4 in Transport Stream, (4:2:0/4:2:2)
 MPEG-2/4 in MPTS (4:2:0, 4:2:2), MPEG-4 (*.m4v)
 MPEG-4/AVC Elementary Stream 4:2:0/4:2:2, (*.h264)
 MPEG-H HEVC/H.265 4:2:0 Main Profile (*.h265)
 MXF Format (DCP, DV, DVCPro50, MPEG, IMX, OP1a)
 Newtek Video Toaster (*.rtv)
 Phantom Support (*.cine), PhotoShop FilmStrip (*.flm)
 Photo CD PCD, Photoshop PSD, Portable anymap PNM
 Portable Bitmap Format PBM DPS
 Portable graymap PGM
 Portable pixmap PPM
 Profile GXF Format/SMPTE-360 (*.gxf)
 QuickTime Movies (*.mov)
 QuickTime formats w/proper codec, ProRes, etc...
 RealVideo (*.ra, *.rm, *.ram), Red Camera Stream (*.r3d)
 Run-Length encoding (*.rle)
 Sony XDCam, SGI Movie Format (*.mv), SGI RGB
 Silicon Image Bayer (*.siv), Sun Raster (*.ras)
 Targa TGA, ICB, VDA, VST, Targa 3000, TIFF, TIF
 v210 Y'CbCr 10 Bit, VC-1 Pro, Viewstore (*.vsr)
 vcap, vcap10, Windows Media (*.asf, *.wmf, *.wmv)
 Y'CbCr 8/10, Y'CbCr, RGB, YCrCb 8/RGGBA

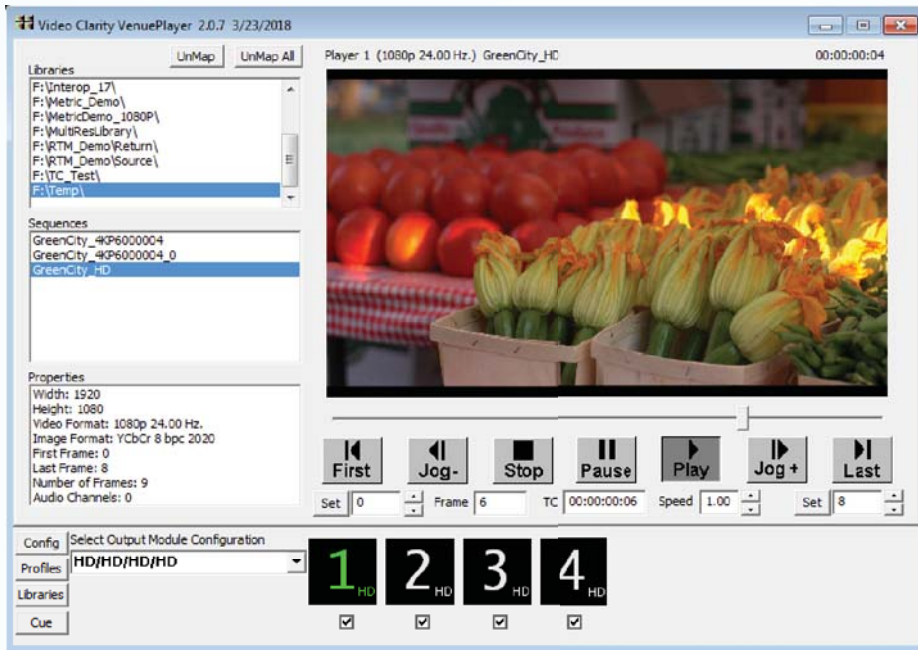
Audio Import Formats

Dolby® Digital Plus Professional Input Decoder
 MPEG-2 Layer 1 (*.mp1)
 MPEG-2 Layer 3 (*.mp3)
 Waveform Audio (*.wav)
 Adaptive Multi-rate (*.amr)
 Audio Interchange File Format (*.aiff)
 Windows Media Audio (*.wma)
 Advanced Audio Coding (*.aac)

Exported File Formats

BMP, Headerless/Raw (*.yuv, *.rgb, *.raw)
 Microsoft AVI (*.avi), MXF (v210)
 QuickTime with up to 16 audio channels

Venue Player GUI



ClearView Player-Recorder GUI



Control

- Venue Player - Desktop GUI
- Venue Player Manager - Browser GUI
- ClearView Player-Recorder - GUI
- VDCP or Command Line Interface

Operation

Record uncompressed video via 3G-SDI:

- Video (8, 10, or 12 bit)
- Audio (up to 16 channels)
- VANC data (all lines)
- Timecode (on SDI or LTC analog)
- Multiple inputs with CLI control

Record to uncompressed via 1G IP:

- MPEG-TS stream capture/decoding

Import multiple file types with the included ClearView Importer:

- Uncompressed video importing
- Decode a variety of files in all formats

Play up to four sequences via 3G-SDI:

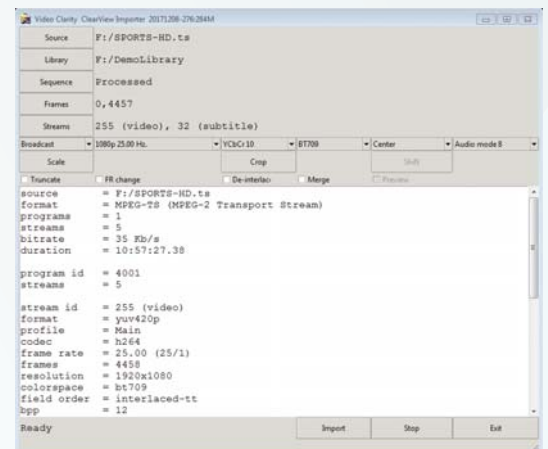
- Video (8, 10, or 12 bit)
- Audio (up to 16 channels)
- VANC data (all lines)
- Timecode (on SDI or LTC analog)

Create play lists from CV Library:

- Play sequences in order or loop play
- Repeat as required for 24 X 7 operation

ClearView Importer

A comprehensive file importing tool for any media file ingest as uncompressed video, audio, and VANC data for playback.



Venue Player HD 1RU



Model #: CVVP-1044

Storage: 4.0 TB

Includes: Venue Player GUI, ClearView Player-Recorder GUI, CV-Importer GUI, 1 RU rack ears, 4 SMB/BNC plus HDMI mini cable, system guide pdfs

Video I/O: Uncompressed SD, HD, UHD, 4K
3G-SDI: 4 SMB/BNC inputs or outputs
- Record or play up to 4 1080p60, or 1 2160p60
Analog: 1 Y'PrPb Comp, or S-Video out
HDMI 1.4b: 1 output on HDMI mini (cable supplied)
Audio I/O: 24 bit, 48 KHz PCM, or DD+
- 16 ch. audio per video (embedded in SDI)
- 8 channels output on HDMI

Video Standards Supported:
SMPTE 259, 292, 296, 424, 425, 4K as Quad HD or two sample interleaved (2SI)
VANC: All lines record and playback
Ref In: Analog black (1V) or CVBS (2 or 4V)
Timecode: SMPTE-12M on SDI, LTC analog
Gigabit Ethernet IP Network:
2 RJ45 - control & capture/decode of IP video

Power: 100 - 240VAC, 47-63Hz, Autodetect, 300 Watts Max
Dimensions: 17" W x 1.75" H x 13.5" D
43.2 cm x 4.5 cm x 34.3 cm
Weight: 16.5 lbs, 7.5 Kg
Temperature: Operating 0 - +40 Celsius
Storage -20 - +50 Celsius
Rel. Humidity: 5 - 95%, noncondensing

Venue Player HD Portable



Model #: CVVP-2044

Storage: 4.0 TB

Includes: Venue Player GUI, ClearView Player-Recorder GUI, CV-Importer GUI, 2RU rack ears, 4 SMB/BNC and HDMI mini cable, hard carry case, keyboard, mouse, system guide pdfs

Video I/O: Uncompressed SD, HD, UHD, 4K
3G-SDI: 4 SMB/BNC inputs or outputs
- Record or play up to 4 1080p60, or 1 2160p60
Analog: 1 Y'PrPb Comp, or S-Video out
HDMI 1.4b: 1 output on HDMI mini (cable supplied)
Audio I/O: 24 bit, 48 KHz PCM, or DD+
- 16 ch. audio per video (embedded in SDI)
- 8 channels output on HDMI

Video Standards Supported:
SMPTE 259, 292, 296, 424, 425, 4K as Quad HD or two sample interleaved (2SI)
VANC: All lines record and playback
Ref In: Analog black (1V) or CVBS (2 or 4V)
Timecode: SMPTE-12M on SDI, LTC analog
Gigabit Ethernet IP Network:
2 RJ45 - control & capture/decode of IP video

Power: 100 - 240VAC, 47-63Hz, Autodetect, 300 Watts Max
Dimensions: 8.6" W x 3.5" H x 13.5" D
22.0 cm x 9.0 cm x 35.0 cm
Weight: 11.5 lbs, 5.4 Kg
Temperature: Operating 0 - +40 Celsius
Storage -20 - +50 Celsius
Rel. Humidity: 5 - 95%, noncondensing

Digital Video Formats Supported for Recording and Playback:

525i 59.94Hz - 625i 50Hz - 720p 60, 59.94, 50Hz - 1080i 60, 59.94, 50Hz

1080p 60, 59.94, 50, 30, 29.97, 25, 24, 23.98Hz - 2160p 60, 59.94, 50, 30, 29.97, 25, 24, 23.98Hz

Optional Software Items:

Waveform / Vectorscope - CV-WFM, Sarnoff test patterns - Visualizer, ESP, and CSM