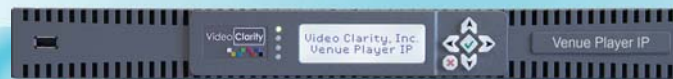
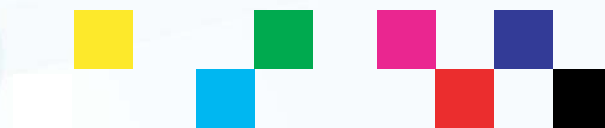


Venue Player IP

Uncompressed 10G IP Network
Multi-Stream Player / Recorders



Video **Clarity**



Tools for Video Analysis

A professional, highly reliable broadcast recorder-multi-stream player. The Venue Player IP systems are ideal when uncompressed video sources are needed for digital transmission or broadcast product testing.

The Venue Player IP provides uncompressed recording and playback for venues, broadcast programming, content quality review, and network performance testing.

Applications:

- Broadcast, enterprise or venue content playback
- Encoder/decoder testing
- Signal path integrity checking
- Lab facility uncompressed content player/server
- Long-haul IP network test source

The Venue Player IP includes many of the popular uncompressed test sequences and also allows for easy recording of additional sequences of any length. A new sequence can either be input and automatically decoded from an IP stream, imported from any of the file import formats shown on the right or it can be recorded from uncompressed 10 Gig IP interfaces. Each sequence may be trimmed with in and out points set. Using the play list feature, any test sequence can be grouped with other test sequences and played in a defined order.

The VANC and audio can be optionally turned on or off to allow complete sequence structural freedom.

The Venue Player IP comes in three models:

- A compact 1 RU player-recorder
- A portable system that ships with hard carry case and rack ears for application versatility
- A hybrid 3 RU server system with high capacity storage sizes and the ability to record or play HD uncompressed video and audio on IP or record and play HD or 4K formats on HDS/1 with HDMI outputs

Options:

- Waveform & Vectorscope Application - CV-WFM
- Sarnoff Test Patterns
 - a. Visualizer - VIS
 - b. Encoder Stress Pattern - ESP
 - c. Color Space and Monitor Test Patterns - CSM

ClearView Importer

Imported File Formats (partial list)

Accom YUV CCIR 601 8-bit
 ARI Raw Bayer Pattern
 Avid AVR, DS HD/SD, DV (*.gen), DNxHD
 Avid Meridian, Y'CbCr, OMFI (*.omf, *.omfi)
 AVR, JFIF, JPED, Meridian, RGB, Y'CbCr
 Cineon (*.cin), CineWave
 DPX RGB 8, RGB 10, Y'CbCr 4:2:2
 DV (*.dv, *.dif), Digital Negative (*.dng)
 DVS Direct File Format (*.dvs)
 DVSD, DV25, DV50, MPEG-I, mJPEG, DigiSuite
 H.261, H.263, H.264, H.265, HDV
 Headerless/Raw (*.hdr, *.yuv, *.rgb, *.raw)
 HiCon SLB32 RFB format (*.slb)
 Image (*.gif, *.jpg, *.png), Jaleo Direct Format (*.js)
 JPEG, JPEG2000, Media 100 MJPEG
 Microsoft AVI (*.avi), BMP, DIB Files (*.dps)
 MJPEG, MPEG 1 4:2:0 (*.mpg, *.mpeg)
 MPEG-2 Elem. Stream, (4:2:0/4:2:2), MPEG-2 (*.m2v)
 MPEG-2 Program Stream, (4:2:0/4:2:2)
 MPEG-2/4 in Transport Stream, (4:2:0/4:2:2)
 MPEG-2/4 in MPTS (4:2:0, 4:2:2), MPEG-4 (*.m4v)
 MPEG-4/AVC Elementary Stream 4:2:0/4:2:2, (*.h264)
 MPEG-H HEVC/H.265 4:2:0 Main Profile (*.h265)
 MXF Format (DCP, DV, DVCPro50, MPEG, IMX, OP1a)
 Newtek Video Toaster (*.rtv)
 Phantom Support (*.cine), PhotoShop FilmStrip (*.flm)
 Photo CD PCD, Photoshop PSD, Portable anymap PNM
 Portable Bitmap Format PBM DPS
 Portable graymap PGM
 Portable pixmap PPM
 Profile GXF Format/SMPTE-360 (*.gxf)
 QuickTime Movies (*.mov)
 QuickTime formats w/proper codec, ProRes, etc...
 RealVideo (*.ra, *.rm, *.ram), Red Camera Stream (*.r3d)
 Run-Length encoding (*.rle)
 Sony XDCam, SGI Movie Format (*.mv), SGI RGB
 Silicon Image Bayer (*.siv), Sun Raster (*.ras)
 Targa TGA, ICB, VDA, VST, Targa 3000, TIFF, TIF
 v210 Y'CbCr 10 Bit, VC-1 Pro, Viewstore (*.vsr)
 vcap, vcap10, Windows Media (*.asf, *.wmf, *.wmv)
 Y'CbCr 8/10, Y'CbCr, RGB, YCrCb 8/RGBA

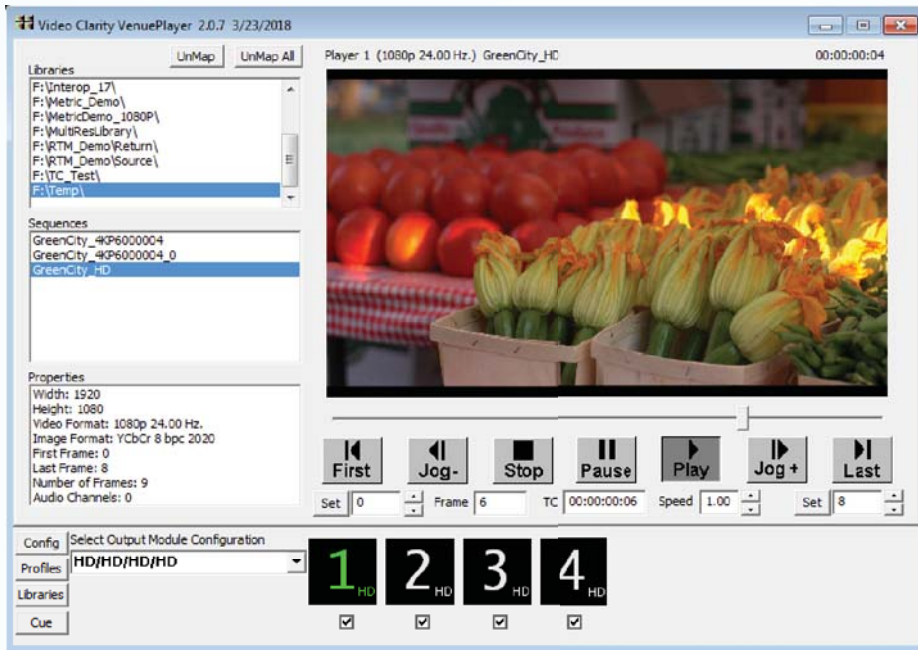
Audio Import Formats

Dolby® Digital Plus Professional Input Decoder
 MPEG-2 Layer 1 (*.mp1)
 MPEG-2 Layer 3 (*.mp3)
 Waveform Audio (*.wav)
 Adaptive Multi-rate (*.amr)
 Audio Interchange File Format (*.aiff)
 Windows Media Audio (*.wma)
 Advanced Audio Coding (*.aac)

Exported File Formats

BMP, Headerless/Raw (*.yuv, *.rgb, *.raw)
 Microsoft AVI (*.avi), MXF (v210)
 QuickTime with up to 16 audio channels

Venue Player GUI



ClearView Player-Recorder GUI



Control

Venue Player GUI
Venue Player Manager
ClearView Player-Recorder GUI
VDCP or Command Line Interface

Operation

Record uncompressed media via 10G IP:

- Video (8, 10, or 12 bit)
- Audio (up to 16 channels)
- VANC data (all lines)
- Timecode (or via LTC BNC input)

Record to uncompressed via 1G IP:

- MPEG-TS stream capture/decoding

Import multiple file types with the included ClearView Importer:

- Uncompressed import of SDR & HDR
- Decode a variety of files in all formats

Play up to four sequences with:

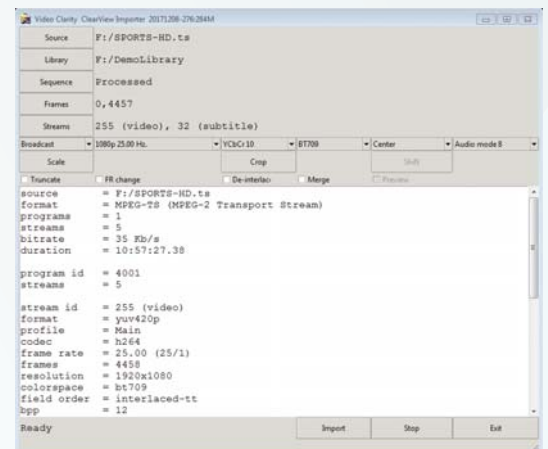
- Video (8, 10, or 12 bit)
- Audio (up to 16 channels)
- VANC data (all lines)
- Timecode according to ST 2110-40
- Slave to PTP Grandmaster (ST 2110-10)

Create play lists from CV Library:

- Play sequences in order or loop play
- Repeat as required for 24 X 7 operation

ClearView Importer

A comprehensive file importing tool for any media file to be loaded as uncompressed video, audio, and VANC data for playback.



Venue Player IP 1 RU



<p>Models: CVVP-1043-IP CVVP-1043-IP-5</p> <p>Storage: 2.5 TB or 5.0 TB</p> <p>Power: 100 - 240VAC, 47-63Hz, Autodetect, 300 Watts Max</p> <p>Includes: Venue Player GUI, ClearView Player, CV-Importer, 1 RU rack ears, printed user guide</p>	<p>Media I/O: SMPTE ST 2110 or 2022-6/7</p> <ul style="list-style-type: none"> - Four streams output, video up to 1080i60 each - One stream record, video up to 1080p60 <p>HDMI 1.4: 1 output, standard size HDMI connector</p> <p>Audio I/O: 24 bit, 48 KHz PCM, or DD+</p> <ul style="list-style-type: none"> - 16 channels ST 2110-30 audio per video stream - 8 channels output on HDMI <p>VANC: SMPTE ST 2110-40 record and playback</p>	<p>Media Transport Interface: 10 Gig Ethernet</p> <ul style="list-style-type: none"> - 2 x SFP+ Cages - SFPs not included - Apply Finisar's FTLX1471D3BCL or Avago AFBR-709SMZ <p>Ref In: ST 2110-10 slave or analog on BNC</p> <p>Timecode: ST 2110-40 or LTC analog BNC</p> <p>Options: Waveform / Vectorscope - CV-WFM Sarnoff test patterns - VIS, ESP, CSM</p>	<p>Gigabit Ethernet IP Network:</p> <ul style="list-style-type: none"> 2 - 1000baseT - RJ45 connections <p>Dimensions: 17" W x 1.75" H x 13.5" D 43.2 cm x 4.5 cm x 34.3 cm</p> <p>Weight: 16.5 lbs, 7.5 Kg</p> <p>Temperature: Operating 0 - +40 Celsius Storage -20 - +50 Celsius</p> <p>Rel. Humidity: 5 - 95%, noncondensing</p>
---	---	---	--

Venue Player IP Portable



<p>Models: CVVP-2043-IP CVVP-2043-IP-5</p> <p>Storage: 2.5 TB or 5.0 TB</p> <p>Includes: Venue Player GUI, ClearView Player, CV-Importer, 2 RU rack ears, HDMI cable (1), carry case, user guide, mouse, keyboard</p>	<p>Media & Video I/O: 10 Gig Ethernet</p> <ul style="list-style-type: none"> 2 x SFP+ Cages - SMPTE ST 2110 or 2022-6/7 - Four streams output up to 1080i60 each - One stream record up to 1080p60 <p>HDMI 1.4: one output, standard HDMI connector</p> <p>VANC: SMPTE ST 2110-40 record and play</p> <p>Options: Waveform / Vectorscope - CV-WFM Sarnoff test patterns - VIS, ESP, CSM</p>	<p>Audio I/O: 24 bit, 48 KHz PCM, or DD+</p> <ul style="list-style-type: none"> - 16 ch. audio per video (SDI or ST 2110-30) - 8 channel output on HDMI <p>Timecode: ST 2110-40, LTC on analog BNC</p> <p>Ref In: ST 2110-10 slave or analog on BNC</p> <p>Gigabit Ethernet IP Network:</p> <ul style="list-style-type: none"> 2 - 1000baseT - RJ45 connections - For control or capture-decode of MPEG-TS 	<p>Power: 100 - 240VAC, 47-63Hz, Autodetect, 300 Watts Max</p> <p>Dimensions: 8.6" W x 3.5" H x 13.5" D 22.0 cm x 9.0 cm x 35.0 cm</p> <p>Weight: 11.5 lbs, 5.4 Kg</p> <p>Temperature: Operating 0 - +40 Celsius Storage -20 - +50 Celsius</p> <p>Rel. Humidity: 5 - 95%, noncondensing</p>
--	--	--	--