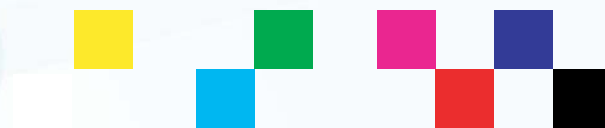


ClearView Player

4K Recorder/Players with Venue Player



Video **Clarity**



Tools for Video Analysis

A professional, highly reliable recorder-player with multi-format output capabilities. The ClearView Player with Venue Player is ideal when uncompressed video sources are needed for synchronized digital video playback or broadcast product testing.

The ClearView Player with Venue Player also provides uncompressed recording, file importing and playback in a side-by-side comparison on each video output for subjective quality analysis.

Applications:

- Encoder/decoder testing
- Lab facility uncompressed A/V player/server
- Long-haul network test source
- Multiple output subjective video quality analysis
- Highest quality multi-screen venue playback
- Display calibration and signal path integrity checking

The ClearView Player includes several uncompressed test sequences and also allows for easy recording of additional video sequences. A new sequence can either be input and automatically decoded from IP stream, imported from any of the file import formats shown on the right or it can be recorded from serial digital inputs. Each sequence may be trimmed with in and out points set. Using the play list feature, any test sequence can be grouped with other test sequences and played in a defined order.

The audio or VANC record and playback can be optionally turned on or off to allow complete sequence structural freedom.

The ClearView Player with Venue Player comes in two models with two storage options each:

- A 4K portable and rack mountable 2 RU system with the ability to record or play up to 4096X2160 at 60Hz and play up to four files of up to 1080p/60Hz each using the included Venue Player application.
- A 4K 3 RU high capacity system with the ability to record one or play two video sequences up to 4096X2160 at 60Hz on two independent Quad/HD outputs. Mix and match 4K and HD formats or play up to eight HD sequences with the included Venue Player application.
- Models listed are upgradable to the full ClearView Analyzer.

ClearView Importer

Imported File Formats (partial list)

Accom YUV CCIR 601 8-bit
 ARI Raw Bayer Pattern
 Avid AVR, DS HD/SD, DV (*.gen), DNxHD
 Avid Meridian, Y'CbCr, OMFI (*.omf, *.omfi)
 AV1, AVC, AVC-HD, AVR, AVS
 Cineon (*.cin), CineWave
 DPX RGB 8, RGB 10, Y'CbCr 4:2:2
 DV (*.dv, *.dif), Digital Negative (*.dng)
 DVS Direct File Format (*.dvs)
 DVSD, DV25, DV50, MPEG-I, mJPEG, DigiSuite
 GXF Format/SMPTE-360 (*.gxf)
 H.261, H.263, H.264, H.265, HDV
 Headerless/Raw (*.hdr, *.yuv, *.rgb, *.raw)
 HiCon SLB32 RFB format (*.slb)
 Image (*.gif, *.jpg, *.png), Jaleo (*.js), JFIF, JPED
 JPEG, JPEG2000, LXF, Meridian, Media 100 MJPEG
 Microsoft AVI (*.avi), BMP, DIB Files (*.dps)
 MJPEG, MPEG 1 4:2:0 (*.mpg, *.mpeg)
 MPEG-2 Elem. Stream, (4:2:0/4:2:2), MPEG2 (*.m2v)
 MPEG-2 Program Stream, (4:2:0/4:2:2)
 MPEG-2/4 in Transport Stream, (4:2:0/4:2:2)
 MPEG-2/4 in MPTS (4:2:0, 4:2:2), MPEG-4 (*.m4v)
 MPEG-4 AVC Elementary Stream 4:2:0/4:2:2, (*.h264)
 MPEG-H HEVC/H.265 4:2:0 Main Profile (*.h265)
 MXF Format (DCP, DV, DVCPPro50, MPEG, IMX, OP1a)
 Newtek Video Toaster (*.rtv)
 Phantom Support (*.cine), PhotoShop FilmStrip (*.flm)
 Photo CD PCD, Photoshop PSD, Portable anymap PNM
 Portable Bitmap Format PBM DPS
 Portable graymap PGM
 Portable pixmap PPM
 QuickTime Movies (*.mov)
 QuickTime formats w/proper codec, ProRes, etc...
 RealVideo (*.ra, *.rm, *.ram), Red Camera Stream (*.r3d)
 Run-Length encoding (rle)
 Sony XDCam, SGI Movie Format (*.mv), SGI RGB
 Silicon Image Bayer (*.siv), Sun Raster (*.ras)
 Targa TGA, ICB, VDA, VST, Targa 3000, TIFF, TIF
 v210 Y'CbCr 10 Bit, VC-1 Pro, VP8, VP9, Viewstore (*.vsr)
 vcap, vcap10, Windows Media (*.asf, *.wmf, *.wmv)
 Y'CbCr 8/10, Y'CbCr, RGB, YCrCb 8/RGBA

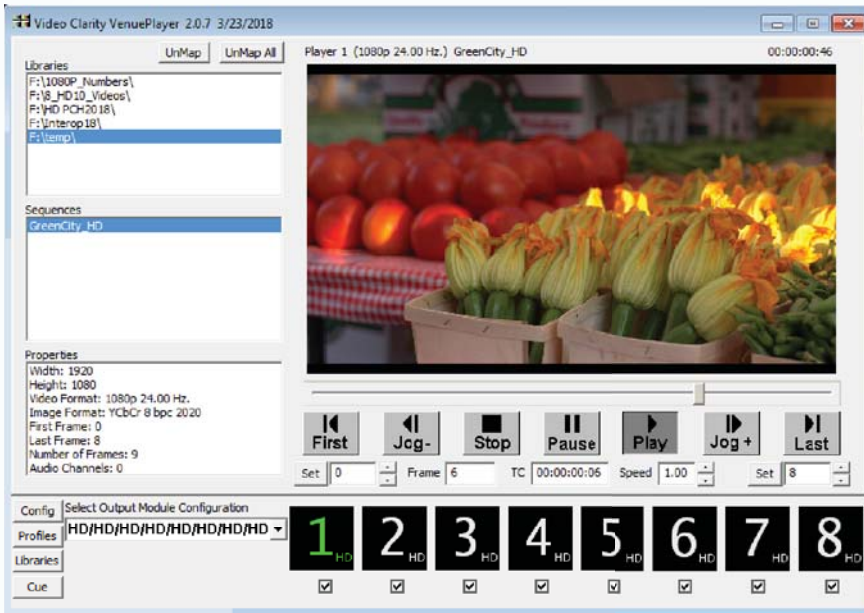
Audio Import Formats

Dolby® Digital Plus Professional Decoder (included)
 MPEG-2 Layer 1 (*.mp1)
 MPEG-2 Layer 3 (*.mp3)
 Waveform Audio (*.wav)
 Adaptive Multi-rate (*.amr)
 Audio Interchange File Format (*.aiff)
 Windows Media Audio (*.wma)
 Advanced Audio Coding (*.aac)

Exported File Formats

BMP, Headerless/Raw (*.yuv, *.rgb, *.raw)
 Microsoft AVI (*.avi), MXF (v210)
 QuickTime with up to 16 audio channels

Venue Player GUI



ClearView Player GUI with HDSDI and IP Record Function



ClearView Player with HDSDI recording and IP capture/decoding, Venue Player, and ClearView Importer are included in all CVVP designated systems and models.

- CV-WFM - An optional waveform and vectorscope for calibrating input or output signals up to 4Kp60 is available.

Control, Ingest and Play

Included applications:

- Venue Player
- ClearView Player-Recorder
- ClearView File Importer
- Command Line Interface
- with easy to use play list function

Uncompressed recording:

- Video (8, 10 or 12 bit)
- Audio (up to 16 channels)
- VANC (all lines record)
- Timecode record via HDSDI and LTC

Record from IP stream up to HD 1080i:

- Automatic decode to uncompressed video and audio for playback by both player apps
- Apply scaling factor at time of capture

Play a sequence with:

- Video (8, 10 or 12 bit)
- Audio (up to 16 channels)
- VANC (all lines play)
- Timecode via HDSDI or LTC analog

Multiple format payout:

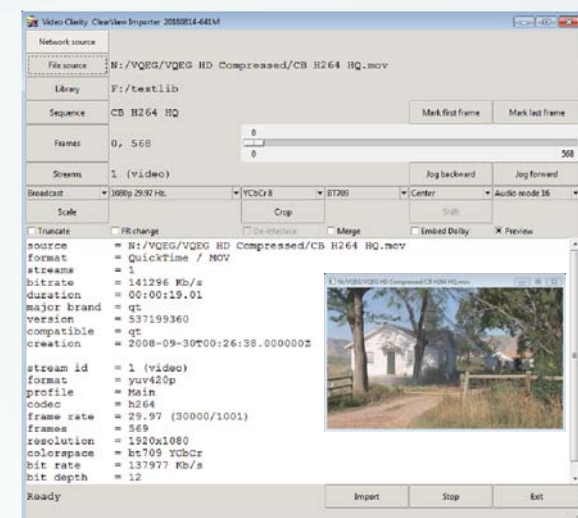
- Mix formats with integer related frame rates
- Lock all sequences to play command

Import multiple file types with the included

ClearView File Importer:

- Uncompressed studio source files
- Compressed files of all types

ClearView Importer GUI





The Venue Player provides the ability to playback multiple uncompressed resolutions of video with audio at the same time. Additionally a side-by-side comparison of two versions of each format may be applied to each video output to the internal capacity of each system. This allows source video versus encoded sequence comparisons to be viewed within each resolution to a choice of monitors.

- Instantly access and compare different distribution formats for quality between resolutions.
- Additionally apply a fixed side-by-side comparison of any one stage of processing to another.
- Apply 4K versus multiple HD resolutions to assess the effect of similar or different bit rates to quality.
- Control up to eight video sequences with audio and give commands to each from the same interface.

ClearView Player with Venue Player - 4K Portable with Single Quad/HD IO and HDMI Output Interface



Models: CVVP-2044, CVVP-2044-5	IP Network & USB Inputs:
Storage: 2.5 TB or 5.0 TB	2 1000baseT on RJ45, 4 USB 3.0
Power: 100 - 240VAC, 47-63Hz, Autodetect, 300 Watts Max	Dimensions: 8.6" W x 3.5" H x 13.75" D 22.0 cm x 9.0 cm x 35.0 cm
Includes: Venue & ClearView Player, CV-Importer, SMB/BNC quad, analog and HDMI mini cable (1), user guide, 2 RU ears (pair), carry case, keyboard, mouse	Weight: 11.5 lbs, 5.4 Kg
Video I/O: SMPTE 259,292,296,424,425a/b, 4K as QuadHD or two sample interleaved (2SI) 4 HD/SD-SDI - in or out (SMB/BNC) - In or out up to 4096X2160p 60Hz 10bit Analog: 1 Y'PrPb, Comp, or S-Video out HDMI 2.0b: 1 output on HDMI mini	Temperature: Operating 0 - +40 celsius Storage -20 - +50 celsius
	Rel. Humidity: 5 - 95%, noncondensing
	Audio I/O: 24 bit, 48 KHz PCM, or DD+ in and out - 16 ch. embedded audio per video SMB/BNC - AES/EBU: 8 channels on 4 BNC in and out
	Timecode: SMPTE-12M on HDSDI, LTC analog
	Ref In: BNC input on analog breakout cable
	Option: CV-WFM - Waveform / Vectorscope

ClearView Player with Venue Player - 4K High Capacity Server w/Dual Quad/HD IO and HDMI Outputs



Models: CVVP-3084-4K-12 CVVP-3084-4K-24	Storage: 12.0 TB or 24.0 TB	Power: 100 - 240VAC, 47-63Hz, Autodetect, 600 Watts Max	IP Network and USB Inputs:
Includes: Venue Player, ClearView Player, CV-Importer, SMB/BNC Quad cables (2), analog breakout (2), HDMI mini cables (2), user guide, mouse, keyboard, 3 RU rack kit	Video I/O: SMPTE 259,292,296,424,425a/b, QuadHD or 2SI 8 HD/SD-SDI - 4 in or 8 out (SMB/BNC) - Up to two 4096X2160p 60Hz 10bit 4:2:2 play Analog: 2 Y'PrPb, Comp, or S-Video outputs HDMI 2.0b: 2 outputs on HDMI mini (cables incl.) Timecode: SMPTE-12M on HDSDI, LTC analog	Audio I/O: 24 bit, 48 KHz PCM, or DD+ in and out - 16 ch. embedded audio per video SMB/BNC - AES/EBU: 8 channels on 4 BNC in and out Ref In: BNC input on analog breakout cables Option: CV-WFM - Waveform / Vectorscope	2 1000baseT on RJ45, 10 USB 3.0
			Dimensions: 17" W x 5.25" H x 20.15" D 43.2 cm x 13.5 cm x 51.4 cm
			Weight: 40 lbs, 18 Kg
			Temperature: Operating 0 - +40 celsius Storage -20 - +50 celsius
			Rel. Humidity: 5 - 95%, noncondensing

Product design and specifications are subject to change without notice or obligation. Video Clarity, Inc.
Dolby and the double-D symbol are trademarks of Dolby Laboratories