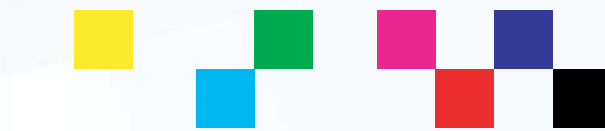


ClearView Player 8K

8K Recorder/Player with Venue Player



Video **Clarity**



Tools for Video Analysis

ClearView Player 8K, a professional, highly reliable recorder-player.

An ideal solution when an uncompressed video source is needed for all types of manual or programmed playback.

ClearView Player 8K provides uncompressed recording and playback for venues and also review, analysis and performance testing from standard definition up to 8K resolutions and frame rates.

Applications:

- Highest quality programmed venue playback
- Encoder/decoder testing
- Display calibration
- Signal path integrity checking
- Lab facility uncompressed A/V player/server
- Long-haul network test source
- On-location 4K or 8K uncompressed recorder
- On-air broadcast player

The ClearView Player includes many of the popular uncompressed test sequences and also allows for easy recording of additional test sequences. A new sequence can either be input from an 8K camera or automatically imported from any of the file import formats shown on the right or it can be recorded from digital inputs.

Each sequence may be trimmed with in and out points set. Using the Venue Player application or command line interface, any video sequence can be grouped with other sequences and played synchronously or in a defined order.

The VANC and audio can be optionally turned on or off to allow complete sequence structural freedom.

The ClearView Player 8K:

- An uncompressed video player with 4 12G-SDI interfaces programmable for recording or playback
- Is capable of playing up to one 8K video or four 4K, HD, or SD video sequences at the same time
- Can be optionally equipped with a Display Port output module for playing multiple RGB HD and UHD sequences for a maximum of one 4K output up to a rate of 120 frames per second

ClearView File Importer

Imported File Formats (partial list)

Accom YUV CCIR 601 8-bit
ARI Raw Bayer Pattern
Avid AVR, DS HD/SD, DV (*.gen), DNxHD
Avid Meridian, Y'CbCr, OMFI (*.omf, *.omfi)
AVR, JFIF, JPED, Meridian, RGB, Y'CbCr
Cineon (*.cin), CineWave
DPX RGB 8, RGB 10, Y'CbCr 4:2:2
DV (*.dv, *.dif), Digital Negative (*.dng)
DVS Direct File Format (*.dvs)
DVSD, DV25, DV50, MPEG-I, mJPEG, DigiSuite
H.261, H.263, H.264, H.265, HDV
Headerless/Raw (*.hdr, *.yuv, *.rgb, *.raw)
HiCon SLB32 RFB format (*.slb)
Image (*.gif, *.jpg, *.png), Jaleo Direct Format (*.js)
JPEG, JPEG2000, Media 100 MJPEG
Microsoft AVI (*.avi), BMP, DIB Files (*.dps)
MJPEG, MPEG 1 4:2:0 (*.mpg, *.mpeg)
MPEG 2 Elem. Stream, (4:2:0/4:2:2), MPEG2 (*.m2v)
MPEG 2 Program Stream, (4:2:0/4:2:2)
MPEG 2/4 in Transport Stream, (4:2:0/4:2:2)
MPEG 2/4 in MPTS (4:2:0, 4:2:2), MPEG4 (*.m4v)
MPEG 4/AVC Elementary Stream 4:2:0/4:2:2, (*.h264)
MPEG-H HEVC/H.265 4:2:0 Main Profile (*.h265)
MXF Format (DCP, DV, DVCPro50, MPEG, IMX, OP1a)
Newtek Video Toaster (*.rtv)
Phantom Support (*.cine), PhotoShop FilmStrip (*.flm)
Photo CD PCD, Photoshop PSD, Portable anymap PNM
Portable Bitmap Format PBM DPS
Portable graymap PGM
Portable pixmap PPM
Profile GXF Format/SMPTE-360 (*.gxf)
QuickTime Movies (*.mov)
QuickTime formats w/proper codec, ProRes, etc...
RealVideo (*.ra, *.rm, *.ram), Red Camera Stream (*.r3d)
Run-Length encoding (*.rle)
SGI Movie Format (*.mv), SGI RGB
Silicon Image Bayer (*.siv), Sun Raster (*.ras)
Targa TGA, ICB, VDA, VST, Targa 3000, TIFF, TIF
v210 Y'CbCr 10 Bit, VC-1 Pro, Viewstore (*.vsr)
vcap, vcap10, Windows Media (*.asf, *.wmf, *.wmv)
Y'CbCr 8/10, Y'CbCr, RGB, YCrCb 8/RGBA

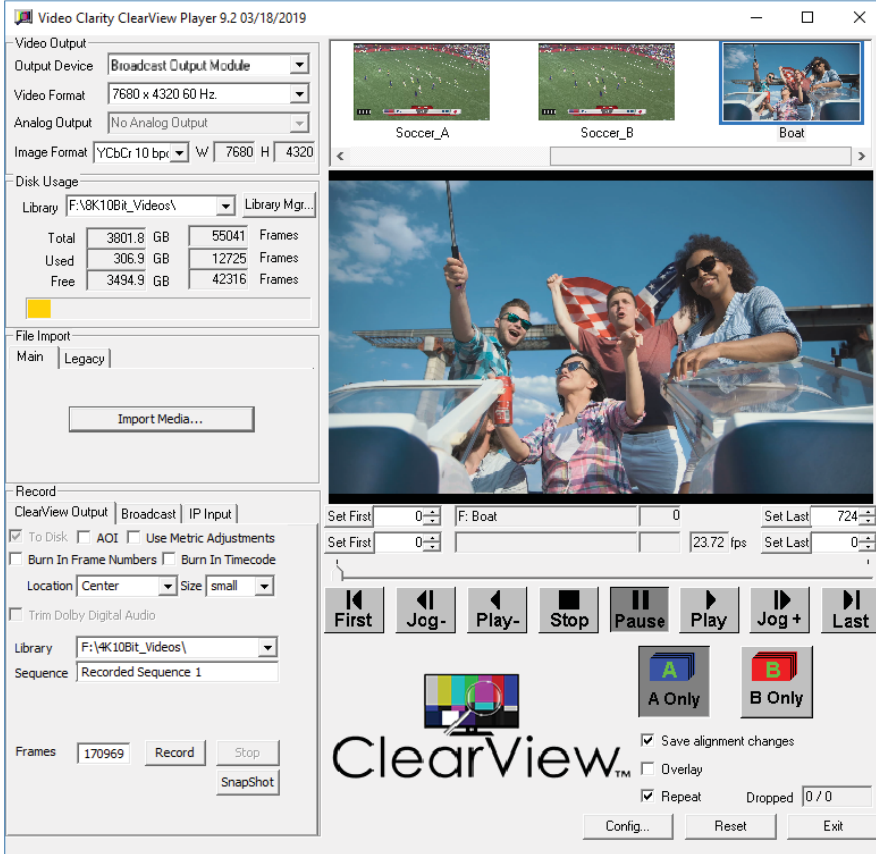
Audio Import Formats

Dolby® Digital Plus Professional Decoder (included)
MPEG-2 Layer 1 (*.mp1)
MPEG-2 Layer 3 (*.mp3)
Waveform Audio (*.wav)
Adaptive Multi-rate (*.amr)
Audio Interchange File Format (*.aiff)
Windows Media Audio (*.wma)
Advanced Audio Coding (*.aac)

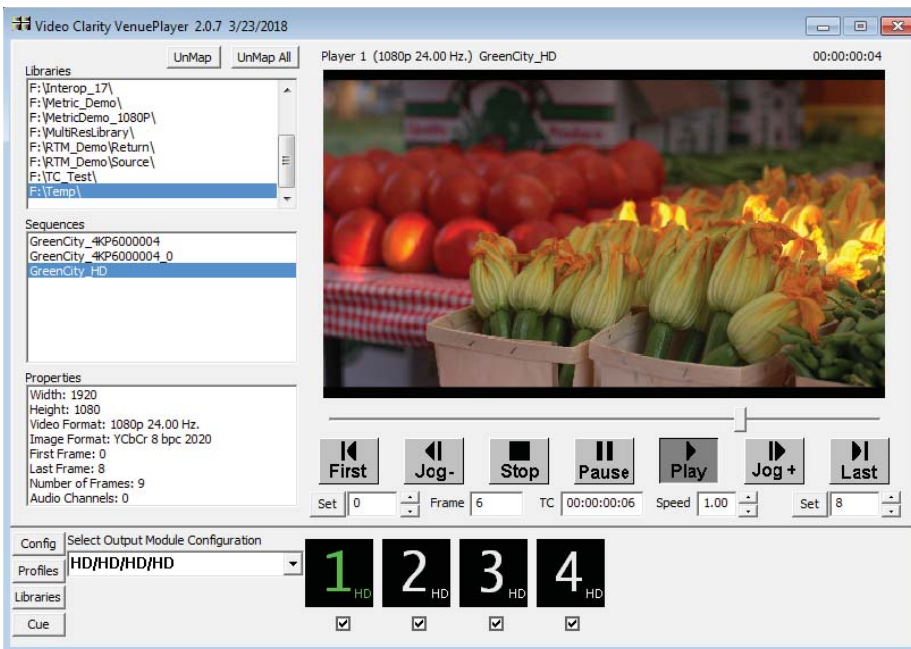
Exported File Formats

BMP, Headerless/Raw (*.yuv, *.rgb, *.raw)
Microsoft AVI (*.avi), MXF (v210)
QuickTime with up to 16 audio channels

ClearView Player 8K GUI



Venue Player GUI



Control

- ClearView Player GUI
- Venue Player GUI
- ClearView File Importer GUI

Batch File Commands:

- Command Line Interface
- Play Lists

Operation

Create a sequence by recording:

- 8K, 4K, HD, or SD video (8 or 10 bit)
- Audio (up to 16 channels SDI embedded)
- VANC (all lines accessible)
- Timecode via HDSDI or LTC analog

Play sequences with:

- 8K video (single instance 8 or 10 bit)
- Up to four 4K, HD, or SD videos
- Audio (up to 16 channels per video)
- VANC (all lines accessible)
- Timecode via HDSDI

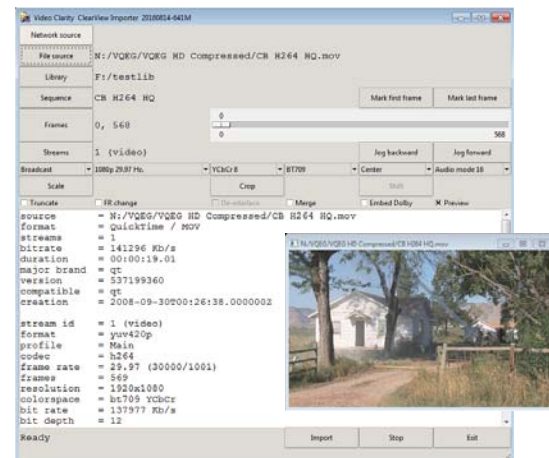
Multiple format play:

- Four independent playback outputs up to 4K each are possible with Venue Player
- Each SDI interface can play a different format at integer related frame rates

Import multiple file types with the included ClearView Importer:

- Uncompressed import of YUV or RGB
- Decode compressed files from any format
- Decode & record IP streams (HD and SD)

ClearView Importer GUI



ClearView Player 8K - 8K Recorder / Player with Venue Player



<p>Models: CVVP-3085-8K-12 CVVP-3085-8K-24</p> <p>Option: CV-DP-O-4</p> <p>Includes: ClearView Player, Venue Player, CV File Importer, System Guide, keyboard, mouse, 5 HD-BNC to BNC cables, HDMI cable, 3RU rack kit</p>	<p>Storage: 12 TB or 24 TB</p> <p>Video I/O: Uncompressed Video Record & Play - 4 12G-SDI in or out, with 8 or 10 bits on HD-BNC - 8K: 7680x4320 as Quad 12G-SDI</p> <p>Format I/O: SMPTE 259, 292, 296, 424, 425a/b, SMPTE 2082, 4K as 2SI, 8K as Quad 12G-SDI</p> <p>Reference Input: Analog Color Black (1V), or Composite Sync (2 or 4V), or HD Tri-Level Sync (1V) via 1 HD-BNC</p>	<p>Power: 100 - 240VAC, 47-63Hz, Autodetect, 700 Watts Max</p> <p>Audio I/O: 24 bit, 48 KHz PCM, or DD+ in and out - 16 channel embedded audio in or out - Dolby® Digital Plus Input Decoder</p> <p>Timecode: SMPTE-12M on SDI, or LTC on BNC*</p> <p>GPI: Command trigger input, serial 9-pin</p>	<p>IP Network Inputs: - 1 10G NIC (RJ45), 1 GNIC (RJ45)</p> <p>Dimensions: 17" W x 5.25" H x 20.15" D 43 cm x 13.5 cm x 51.4 cm</p> <p>Weight: 36 lbs, 16.4 Kg</p> <p>Temperature: Operating 0 - +40 Celsius Storage -20 - +50 Celsius</p> <p>Rel. Humidity: 5 - 95%, noncondensing *LTC provided via optional breakout cable only</p>
---	--	--	---

<p>Output Option: CV-DP-O-4 Four output Display Port module</p>	<p>Digital Video: 4 DP 1.4 outputs per system addressable via Venue Player application - Supports RGB 4:4:4 10 bit uncompressed video formats</p>	<p>Display Port Outputs: Programmable as four HD, three UHD, or single output up to 4096x2160 120p</p>
--	--	---

<p>SDI Video Formats Supported:</p> <p>8K 7680x4320p 23.98, 24, 25, 29.97, 30, 50, 59.94, 60 Hz</p> <p>4K 4096x2160p 23.98, 24, 25, 29.97, 30, 50, 59.94, 60 Hz 3840x2160p 23.98, 24, 25, 29.97, 30, 50, 59.94, 60 Hz</p>	<p>HD 720p 50, 50.94, 60 Hz 1080i 50, 59.94, 60 Hz 1080p 23.98, 24, 25, 29.97, 30, 50, 59.94, 60 Hz</p> <p>SD 525i 59.94 Hz 625i 50 Hz</p>	<p>Play/Record Duration Examples Per Product Model:</p> <table border="0"> <tr> <td>Video Standard</td> <td>12 TB</td> <td>24 TB</td> </tr> <tr> <td>7680x4320@60p, 10-bit, 4:2:2</td> <td>40 min.</td> <td>80 min.</td> </tr> <tr> <td>7680x4320@60p, 8-bit, 4:2:2</td> <td>54 min.</td> <td>108 min.</td> </tr> <tr> <td>3840x2160@60p, 10-bit, 4:2:2</td> <td>162 min.</td> <td>324 min.</td> </tr> <tr> <td>3840x2160@60p, 8-bit, 4:2:2</td> <td>216 min.</td> <td>432 min.</td> </tr> </table>	Video Standard	12 TB	24 TB	7680x4320@60p, 10-bit, 4:2:2	40 min.	80 min.	7680x4320@60p, 8-bit, 4:2:2	54 min.	108 min.	3840x2160@60p, 10-bit, 4:2:2	162 min.	324 min.	3840x2160@60p, 8-bit, 4:2:2	216 min.	432 min.
Video Standard	12 TB	24 TB															
7680x4320@60p, 10-bit, 4:2:2	40 min.	80 min.															
7680x4320@60p, 8-bit, 4:2:2	54 min.	108 min.															
3840x2160@60p, 10-bit, 4:2:2	162 min.	324 min.															
3840x2160@60p, 8-bit, 4:2:2	216 min.	432 min.															

Product design and specifications are subject to change without notice or obligation. Video Clarity, Inc.
Dolby and the double-D symbol are trademarks of Dolby Laboratories