

## Central Management And Storage Solution For RTM Systems

The RTM product line has a centralized management solution, RTM Manager.

RTM Manager provides control, test status, storage of error sequences with logs, and playback of recorded errors allowing access to all RTM error events and test data.



## Web Server Status Dashboard, Set Up And Control Menu In A Browser

- Status Dashboard shows activity of multiple RTMs to any user via HTML browser
- Color coded map provides visual cue of RTM status and time interval of test errors
- Control menu supports a wide range of RTM commands and includes remote software update

RTM Status

127.0.0.1/status

Video Clarity RTM Manager - Status

Tools for Video Analysis version 20150810 Last error occurred: 0.5 min [5,30] min [30,60] min [60,\*) min

Unit	Session	State	Run Time d:h:m:s	Metric	Last Error	Video Errors	Audio Errors	Lipsync Errors	Loudness Errors Input 1	Loudness Errors Input 2	VANC Errors	Video Offset (frames)	Audio Offset (msec)
16-Seagates1	720P59_SDI2_IP231_PSNR_Dolby	Monitoring	00:00:45:01	44.10	2015-08-17 15:12:28	0	179	0	0	0	0	375	6977.29
16-Seagates2	720P59_SDI2_IP231_PSNR_Dolby	Not ready	00:00:00:00			0	0	0	0	0	0	0	0.00
RTM-1RU07	720P59_SDI2_IP231_PSNR_Dolby	Offline	00:00:17:20	43.21		0	0	0	0	0	0	360	-13.95
RTM-1RU08	720P59_SDI2_IP231_PSNR_Dolby	Stopped	00:00:00:00			0	0	0	0	0	0	0	0.00
RTM-1RU09	720P59_SDI2_IP231_PSNR_Dolby	Aligning	00:00:00:00		2015-08-17 03:46:05	0	3142	0	0	0	0	0	0.00
RTM-1RU12	720P59_SDI2_IP231_PSNR_Dolby	Not ready	00:00:00:00			0	0	0	0	0	0	0	0.00

Select rtm to change | RTM

127.0.0.1/admin/rm/rtm/

Video Clarity RTM Manager - Control

Tools for Video Analysis version 20150810 Add rtm +

Action: [dropdown] Go 0 of 6 selected

Name	IP Address	Input1	Input2	RTM	IPrecord	Action	Result	Monitor	Disk free %
16-Seagates2	192.168.1.88	SDI Input 2	231.1.1.1::1111	2.8.1.0	0.8.2.1		realign: OK	✓	99
RTM-1RU12	192.168.1.70	SDI Input 2	231.1.1.1::1111	2.8.1.0	0.8.2.1		realign: OK: Video Offset = 0, Audio Offset = 0 samples, 0.0000 msec, 0.0000 frames	✓	99
RTM-1RU08	192.168.1.67	SDI Input 2	231.1.1.1::1111	2.8.1.0	0.8.2.1		realign: OK: Video Offset = 0, Audio Offset = 0 samples, 0.0000 msec, 0.0000 frames	✓	95
16-Seagates1	192.168.1.71	SDI Input 2	231.1.1.1::1111	2.8.1.0	0.8.2.1		realign: Command 'rtm /c 127.0.0.1 realign 1 1' timed out after 10 seconds	✓	99
RTM-1RU07	192.168.1.102	SDI Input 2	231.1.1.1::1111	2.8.1.0	0.8.2.1		realign: unit not available	✓	99
RTM-1RU09	192.168.1.72	SDI Input 2	231.1.1.1::1111	2.8.1.0	0.8.2.1		realign: OK: Video Offset = 0, Audio Offset = 0 samples, 0.0000 msec, 0.0000 frames	✓	2

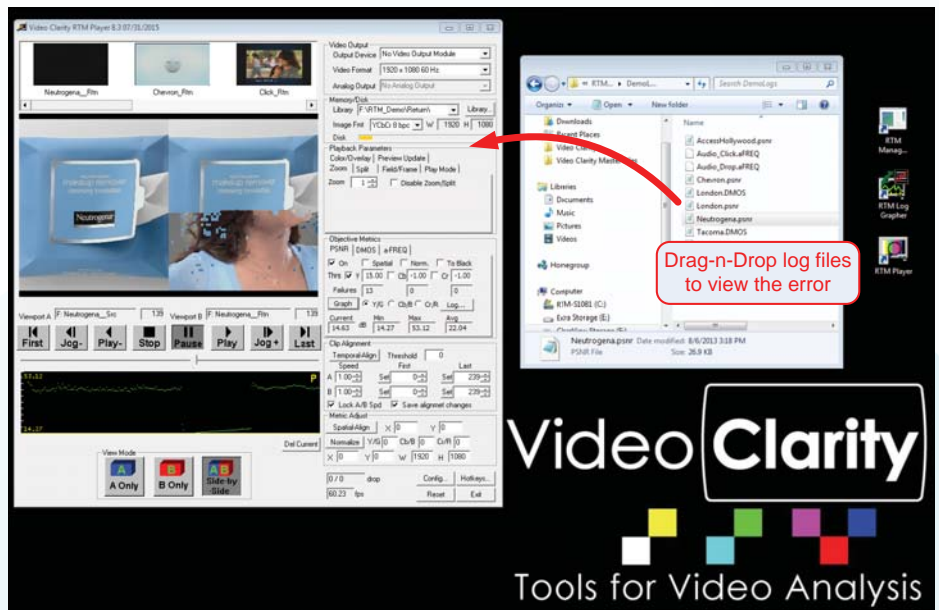
6 rtm

## Central Logger With RTM Player

Impaired video/audio recordings are immediately transferred to RTM Manager from all network attached RTMs over gigabit Ethernet.

Event logs and quality measurement average logs are also continuously generated and are automatically transferred from each RTM system for analysis via RTM Log Grapher.

As errors occur operators are able to view uncompressed video in a side by side comparison either on the video output or in a desktop window without stopping the RTM system that caught the error.



Desktop view of RTM Player operation

## RTM Manager - Model: RTM-MGR04



**Model: RTM-MGR04**

**Storage:** 4.0 TB

**Power:**

100 - 240VAC, 47-63Hz, Autodetect  
300 Watts Max

**Includes:**

Web Server, Status and Control Dashboard, Automated Archive, RTM Log Grapher, RTM Player, RTM Scheduler client, System Guide and 1 RU rack ears

**Video I/O:**

ITU-601, SMPTE 259/292/296/424  
2 HD/SD-SDI - outputs (BNC)  
- side by side playback or output up to two signals, 1080p 60Hz each

**Option:** Configured as single out, HDSDI & HDMI

- 1 HD/SD-SDI 3G output  
- 1 HDMI 1.3 a output (mini), cable supplied

**Audio I/O:**

24 bit, 48 KHz PCM  
2 HD/SD-SDI - inputs\* and outputs (BNC)  
- 8 channels of embedded audio per BNC

**Physical Specifications:**

Dimensions 17" W x 1.75" H x 10" D  
43.2 cm x 4.5 cm x 25.4 cm  
Weight 11.7 lbs, 5.3 Kg

**Temperature:**

Operating: +5 - +35 Celsius  
Storage: -20 - +50 Celsius  
Relative Humidity: 5-95%, non condensing

**IP Network Connections:** 2 GNIC - RJ45

Product design and specifications are subject to change without notice or obligation. Video Clarity, Inc.