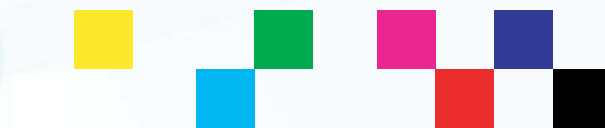


Venue Player IP

Uncompressed 10G IP Network
Multi-Stream Player / Recorders



Video **Clarity**



Tools for Video Analysis

A professional, highly reliable broadcast recorder-multi-stream player. The Venue Player IP systems are ideal when uncompressed video sources are needed for digital transmission or broadcast product testing.

The Venue Player IP provides uncompressed recording and playback for venues, broadcast programming, content quality review, and network performance testing.

Applications:

- Broadcast, enterprise or venue content playback
- Encoder/decoder testing
- Signal path integrity checking
- Lab facility uncompressed content player/server
- Long-haul IP network test source

The Venue Player IP includes many of the popular uncompressed test sequences and also allows for easy recording of additional sequences of any length. A new sequence can either be input and automatically decoded from an IP stream, imported from any of the file import formats shown on the right or it can be recorded from uncompressed 10 Gig IP interfaces. Each sequence may be trimmed with in and out points set. Using the play list feature, any test sequence can be grouped with other test sequences and played in a defined order.

The VANC and audio can be optionally turned on or off to allow complete sequence structural freedom.

The Venue Player IP comes in three models:

- A compact 1 RU player-recorder
- A portable system that ships with hard carry case and rack ears for application versatility
- A hybrid 3 RU server system with high capacity storage sizes and the ability to record or play HD uncompressed video and audio on IP or record and play HD or 4K formats on HDS/SDI with HDMI outputs

Options:

- Waveform & Vectorscope Application - CV-WFM
- Sarnoff Test Patterns
 - a. Visualizer - VIS
 - b. Encoder Stress Pattern - ESP
 - c. Color Space and Monitor Test Patterns - CSM

ClearView Importer

Imported File Formats (partial list)

Accom YUV CCIR 601 8-bit
ARI Raw Bayer Pattern
Avid AVR, DS HD/SD, DV (*.gen), DNxHD
Avid Meridian, Y'CbCr, OMFI (*.omf, *.omfi)
AVR, JFIF, JPED, Meridian, RGB, Y'CbCr
Cineon (*.cin), CineWave
DPX RGB 8, RGB 10, Y'CbCr 4:2:2
DV (*.dv, *.dif), Digital Negative (*.dng)
DVS Direct File Format (*.dvs)
DVSD, DV25, DV50, MPEG-I, mJPEG, DigiSuite
H.261, H.263, H.264, H.265, HDV
Headerless/Raw (*.hdr, *.yuv, *.rgb, *.raw)
HiCon SLB32 RFB format (*.slb)
Image (*.gif, *.jpg, *.png), Jaleo Direct Format (*.js)
JPEG, JPEG2000, Media 100 MJPEG
Microsoft AVI (*.avi), BMP, DIB Files (*.dps)
MJPEG, MPEG 1 4:2:0 (*.mpg, *.mpeg)
MPEG-2 Elem. Stream, (4:2:0/4:2:2), MPEG-2 (*.m2v)
MPEG-2 Program Stream, (4:2:0/4:2:2)
MPEG-2/4 in Transport Stream, (4:2:0/4:2:2)
MPEG-2/4 in MPTS (4:2:0, 4:2:2), MPEG-4 (*.m4v)
MPEG-4/AVC Elementary Stream 4:2:0/4:2:2, (*.h264)
MPEG-H HEVC/H.265 4:2:0 Main Profile (*.h265)
MXF Format (DCP, DV, DVCPro50, MPEG, IMX, OP1a)
Newtek Video Toaster (*.rtv)
Phantom Support (*.cine), PhotoShop FilmStrip (*.flm)
Photo CD PCD, Photoshop PSD, Portable anymap PNM
Portable Bitmap Format PBM DPS
Portable graymap PGM
Portable pixmap PPM
Profile GXF Format/SMPTE-360 (*.gxf)
QuickTime Movies (*.mov)
QuickTime formats w/proper codec, ProRes, etc...
RealVideo (*.ra, *.rm, *.ram), Red Camera Stream (*.r3d)
Run-Length encoding (*.rle)
Sony XDCam, SGI Movie Format (*.mv), SGI RGB
Silicon Image Bayer (*.siv), Sun Raster (*.ras)
Targa TGA, ICB, VDA, VST, Targa 3000, TIFF, TIF
v210 Y'CbCr 10 Bit, VC-1 Pro, Viewstore (*.vsr)
vcap, vcap10, Windows Media (*.asf, *.wmf, *.wmv)
Y'CbCr 8/10, Y'CbCr, RGB, YCrCb 8/RGBA

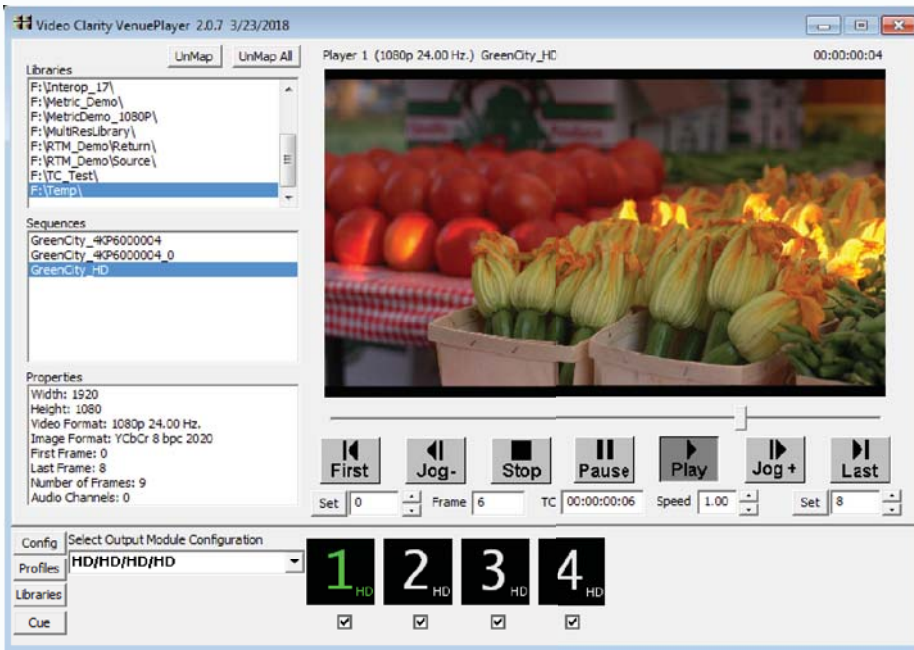
Audio Import Formats

Dolby® Digital Plus Professional Input Decoder
MPEG-2 Layer 1 (*.mp1)
MPEG-2 Layer 3 (*.mp3)
Waveform Audio (*.wav)
Adaptive Multi-rate (*.amr)
Audio Interchange File Format (*.aiff)
Windows Media Audio (*.wma)
Advanced Audio Coding (*.aac)

Exported File Formats

BMP, Headerless/Raw (*.yuv, *.rgb, *.raw)
Microsoft AVI (*.avi), MXF (v210)
QuickTime with up to 16 audio channels

Venue Player GUI



ClearView Player-Recorder GUI



Control

Venue Player GUI
Venue Player Manager
ClearView Player-Recorder GUI
VDCP or Command Line Interface

Operation

Record uncompressed media via 10G IP:

- Video (8, 10, or 12 bit)
- Audio (up to 16 channels)
- VANC data (all lines)
- Timecode (or via LTC BNC input)

Record to uncompressed via 1G IP:

- MPEG-TS stream capture/decoding

Import multiple file types with the included ClearView Importer:

- Uncompressed import of SDR & HDR
- Decode a variety of files in all formats

Play up to four sequences with:

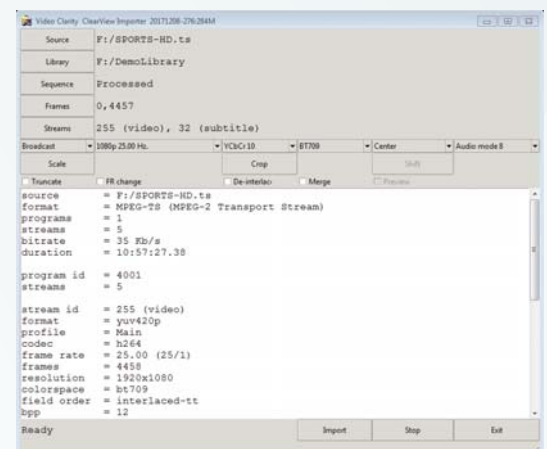
- Video (8, 10, or 12 bit)
- Audio (up to 16 channels)
- VANC data (all lines)
- Timecode according to ST 2110-40
- Slave to PTP Grandmaster (ST 2110-10)

Create play lists from CV Library:

- Play sequences in order or loop play
- Repeat as required for 24 X 7 operation

ClearView Importer

A comprehensive file importing tool for any media file to be loaded as uncompressed video, audio, and VANC data for playback.



Venue Player IP - Specifications

Venue Player IP 1 RU



- | | | | |
|---|---|---|---|
| <p>Models: CVVP-1043-IP
CVVP-1043-IP-5</p> <p>Storage: 2.5 TB or 5.0 TB</p> <p>Power: 100 - 240VAC, 47-63Hz, Autodetect, 300 Watts Max</p> <p>Includes: Venue Player GUI, ClearView Player, CV-Importer, 1 RU rack ears, printed user guide</p> | <p>Media I/O: SMPTE ST 2110 or 2022-6/7</p> <ul style="list-style-type: none"> - Four streams output, video up to 1080p60 each - One stream record, video up to 1080p60 <p>HDMI 1.4 - 1 output, standard size HDMI connector</p> <p>Audio I/O: 24 bit, 48 KHz PCM, or DD+</p> <ul style="list-style-type: none"> - 16 channels ST 2110-30 audio per video stream - 8 channels output on HDMI <p>VANC: SMPTE ST 2110-40 record and playback</p> | <p>Media Transport Interface: 10 Gig Ethernet</p> <ul style="list-style-type: none"> - 2 x SFP+ Cages - SFPs not included - Apply Finisar's FTLX1471D3BCL or Avago AFBR-709SMZ <p>Ref In: ST 2110-10 slave or analog on BNC</p> <p>Timecode: ST 2110-40 or LTC analog BNC</p> <p>Options: Waveform / Vectorscope - CV-WFM Sarnoff test patterns - VIS, ESP, CSM</p> | <p>Gigabit Ethernet IP Network:</p> <ul style="list-style-type: none"> 2 - 1000baseT - RJ45 connections <p>Dimensions: 17" W x 1.75" H x 13.5" D
43.2 cm x 4.5 cm x 34.3 cm</p> <p>Weight: 16.5 lbs, 7.5 Kg</p> <p>Temperature: Operating +5 - +25 Celsius
Storage -20 - +50 Celsius</p> <p>Rel. Humidity: 5 - 95%, noncondensing</p> |
|---|---|---|---|

Venue Player IP Portable



- | | |
|---|--|
| <p>Models: CVVP-2043-IP, CVVP-2043-IP-5</p> <p>Storage: 2.5 TB or 5.0 TB</p> <p>Power: 100 - 240VAC, 47-63Hz, Autodetect, 300 Watts Max</p> <p>Includes: Venue Player GUI, ClearView Player, CV-Importer, keyboard, mouse, 2 RU rack ears, carry case, user guide</p> <p>Options: Waveform / V-scope - CV-WFM Sarnoff test patterns - VIS, ESP, CSM</p> <p>Dimensions: 8.6" W x 3.5" H x 13.75" D
22.0 cm x 9.0 cm x 35.0 cm</p> <p>Weight: 11.5 lbs, 5.4 Kg</p> <p>Temperature: Operating +5 - +25 Celsius
Storage -20 - +50 Celsius</p> <p>Rel. Humidity: 5 - 95%, noncondensing</p> | <p>Media Transport Interface: 10 Gig Ethernet</p> <ul style="list-style-type: none"> - 2 x SFP+ Cages - SFPs not included <p>Media I/O: SMPTE ST 2110 or 2022-6/7</p> <ul style="list-style-type: none"> - Four streams output, video up to 1080p60 - One stream record, video up to 1080p60 <p>HDMI 1.4 - 1 output, standard size HDMI</p> <p>Audio I/O: 24 bit, 48 KHz PCM, or DD+</p> <ul style="list-style-type: none"> - 16 ch. ST 2110-30 audio per video stream - 8 channels output on HDMI <p>VANC: SMPTE ST 2110-40 record and play</p> <p>Ref In: ST 2110-10 slave or analog on BNC</p> <p>Timecode: ST 2110-40 or LTC analog BNC</p> <p>Gigabit Ethernet IP Network:</p> <ul style="list-style-type: none"> 2 - 1000baseT - RJ45 connections - For control or capture-decode of MPEG-TS |
|---|--|

Venue Player IP High Capacity Server with 10G IP and Quad HDSDI-4K



- | | | | |
|---|--|--|--|
| <p>Models: CVVP-3084-IP-12
CVVP-3084-IP-24</p> <p>Storage: 12.0 TB or 24.0 TB</p> <p>Includes: Venue Player GUI, ClearView Player, CV-Importer, SMB/BNC quad cable (1), analog breakout (1), HDMI mini cable (1), guide, keyboard, mouse, rack kit</p> | <p>Media & Video I/O: 10 Gig Ethernet & Quad 3G</p> <ul style="list-style-type: none"> 2 x SFP+ Cages - SMPTE ST 2110 or 2022-6/7 - 1 in or 4 out up to 1080p60 - SFPs not included 4 x 3G HDSDI - (SMB/BNC) - In or out, up to 4096x2160p60 10bit 4:2:2 <p>SMPTE 259,292,296,424,425, QuadHD or 2SI</p> <p>Analog: Y'PrPb or Composite or S-Video output</p> <p>HDMI out: one 1.4 and one 2.0b on HDMI mini</p> <p>VANC: SMPTE ST 2110-40 record and play</p> | <p>Audio I/O: 24 bit, 48 KHz PCM, or DD+</p> <ul style="list-style-type: none"> - 16 ch. audio per video (SDI or ST 2110-30) <p>- AES/EBU: 8 channels on 4 BNC in or out</p> <p>Timecode: ST 2110-40, SMPTE-12M, or LTC</p> <p>Ref In: ST 2110-10 slave or analog on BNC</p> <p>Options: CV-WFM and Sarnoff test patterns</p> <p>Gigabit Ethernet IP Network:</p> <ul style="list-style-type: none"> 2 - 1000baseT - RJ45 connections - For control or capture-decode of MPEG-TS | <p>Power: 100 - 240VAC, 47-63Hz, Autodetect, 600 Watts Max</p> <p>Dimensions: 17" W x 5.25" H x 20.15" D
43.2 cm x 13.5 cm x 51.4 cm</p> <p>Weight: 40 lbs, 18 Kg</p> <p>Temperature: Operating +5 - +25 Celsius
Storage -20 - +50 Celsius</p> <p>Rel. Humidity: 5 - 95%, noncondensing</p> |
|---|--|--|--|

Product design and specifications are subject to change without notice or obligation. Video Clarity, Inc.
Dolby and the double-D symbol are trademarks of Dolby Laboratories